



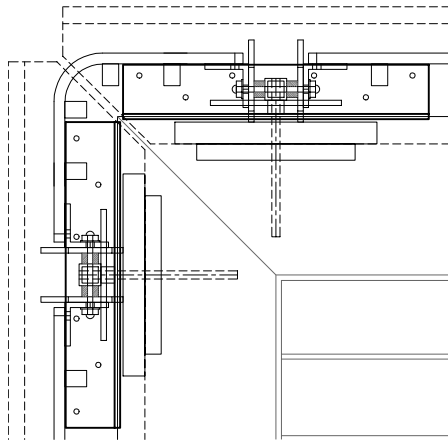
ALUMINUM AND WOOD DECK RAIL SYSTEM

Natick, Massachusetts
2004

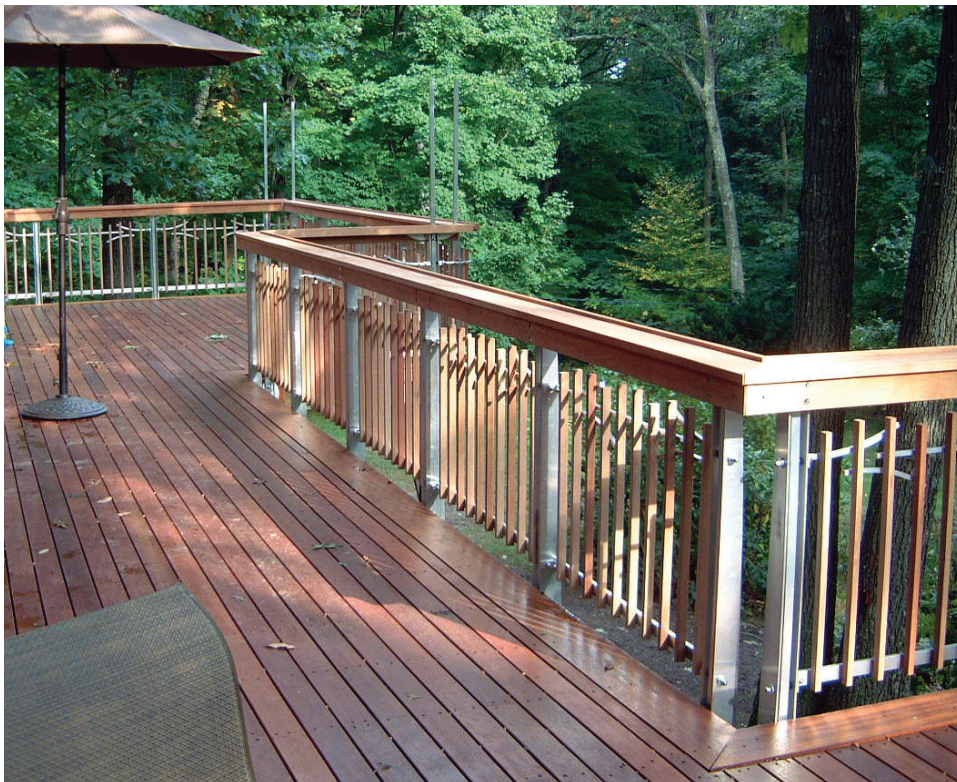
The mahogany and aluminum deck railing system was added to a new deck attached to this mid-twentieth century house to provide a secure place to enjoy the surrounding wooded landscape. The deck and rail are components of a comprehensive masterplan for the residence and its large site. Emphasis was placed on the verticality of the elements with a desire to retain a sense of openness. The pattern of the railing elements negotiates between the rigid geometry of the house and the natural surroundings.

The railing is constructed of standardized aluminum and mahogany components that are easily assembled and disassembled for maintenance and to accommodate the future expansion requirements of the master plan. Although the perimeter of the deck is now fully enclosed, the modular nature of the design allows the panels to be readily interchanged to allow for future additions such as stairs to a lower deck, and entry from the sides of the house. The aluminum tube stanchions may also be interchanged and re-programmed for lighting, planters and bird-feeders.

client	undisclosed
function	deck and rail
primary materials	aluminum structure mahogany rail



Plan detail at corner, above, view of corner, right



View from deck

Elevation drawing

