



## SAINT MARK'S SCHOOL SQUASH COURT

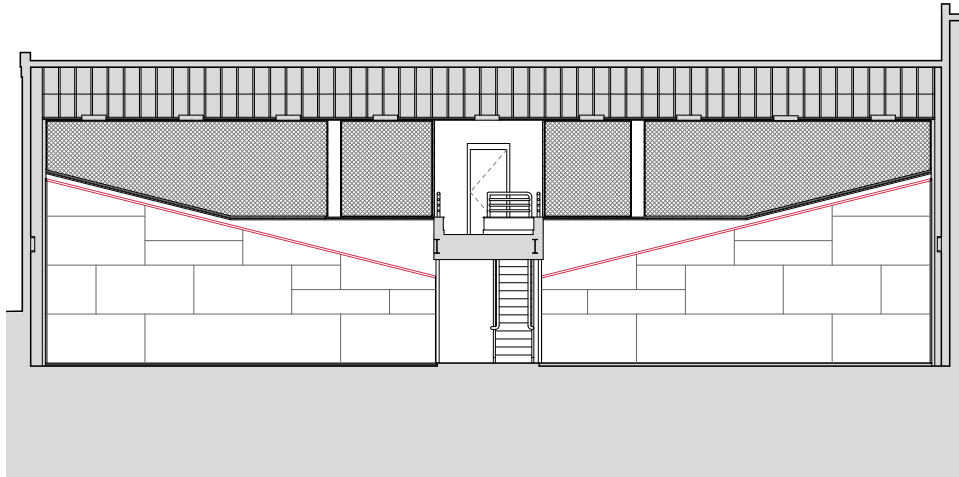
Southborough, Massachusetts  
2003

Following the success of the International Squash Courts project at the Union Boat Club in Boston, Massachusetts, Kimo Griggs Architects, Inc. was invited to design and oversee the installation of six new international squash courts within an existing envelope at the Saint Mark's School athletic facility.

Recent rules changes have forced schools, colleges and clubs wishing to host legal competition to provide larger "International" squash courts in place of the previously standard "American" squash courts. The challenge in this project was to find a way to provide six new courts in an elegant, logical, and cost effective manner. In addition the existing structure and as much of the mezzanine structure as possible were to be incorporated into the design, all while conforming to a very tight construction schedule so as to not disrupt a very active school calendar. Kimo Griggs Architects worked closely with the contractor, Erland Construction, and the client to complete the project on time and within budget. Some of the fabricated details were provided by Kimo, Inc. to ensure cost-effective production, to save time and to ensure the highest quality of material and finish.

client	St. Mark's School
size	6000 s.f.
construction cost	\$500,000
status	completed 2003

Cross-section through courts and mezzanine facing west



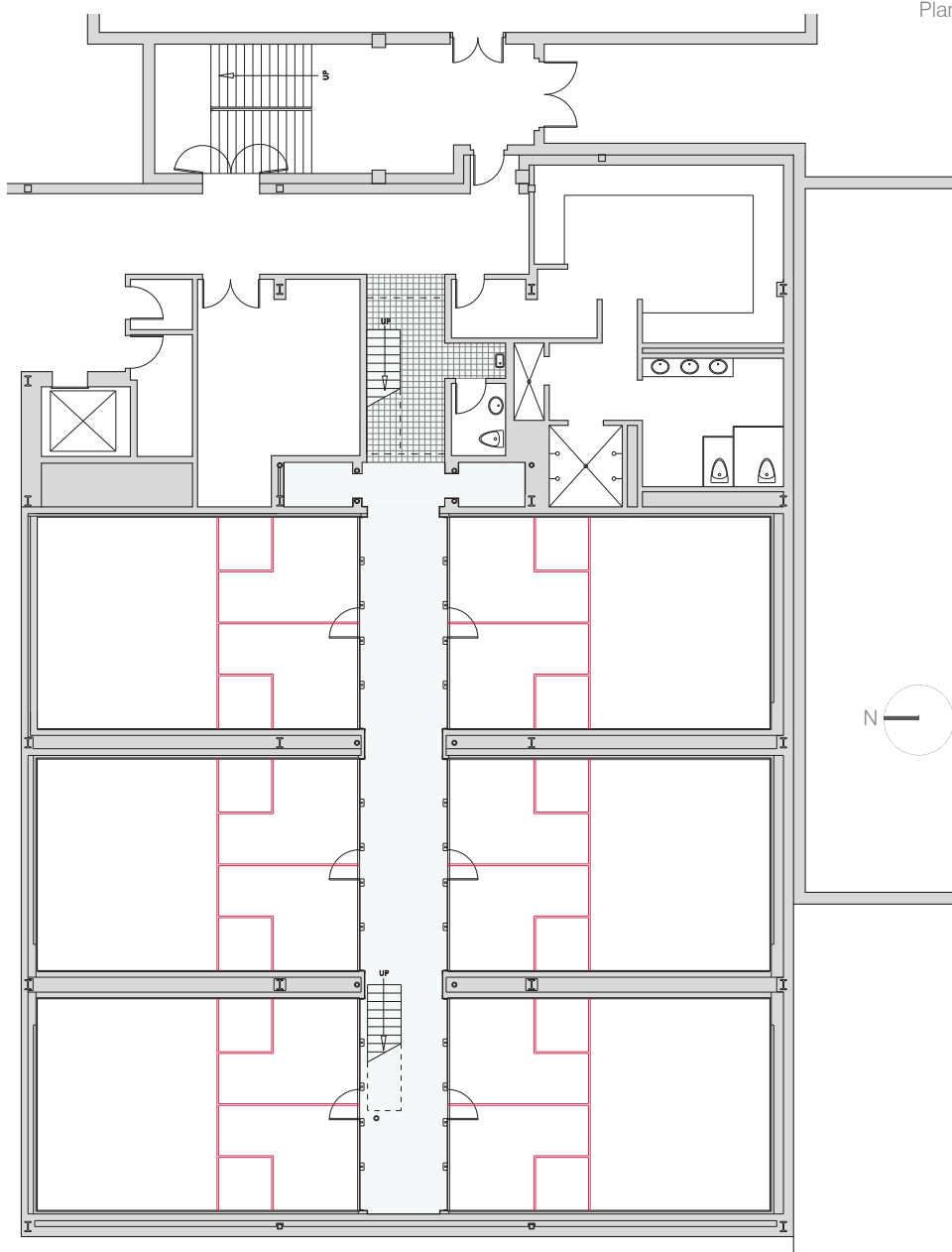
KIMO GRIGGS ARCHITECTS, INC.



View of courts from mezzanine facing west



View of corridor showing new glass back walls, facing west



Plan