



View from mezzanine walkway

REINVENTING THE NEWPORT SQUASH CLUB

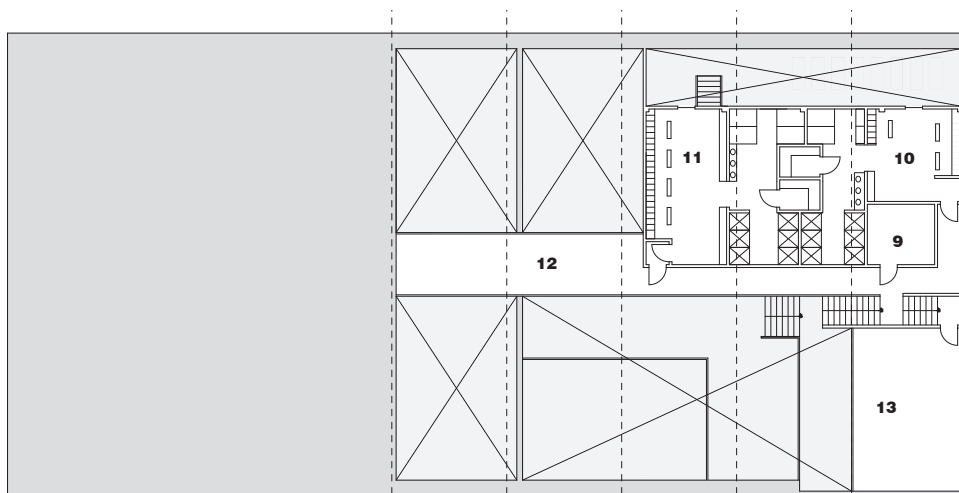
Newport, Rhode Island
2004

The Newport Squash Club was first developed to serve a small, group of squash enthusiasts in Newport, Rhode Island. After many years of heavy use, and an awkward conversion from the American hard ball courts to larger courts intended for international softball play, the facility was in need of a substantial upgrade. Kimo Griggs Architects, Inc. was asked to rethink the facility, to provide legal courts without physical obstructions, to visually tie the Club to the adjacent Tennis Hall of Fame, and to provide new fitness and weight lifting facilities to satisfy an aging membership while also attracting a younger and more discerning generation of athletes. A new glass-walled exhibition court anchors the large main entry and exhibition space, onto which the, pro-shop, locker rooms and weight rooms also open. Locker rooms are reached via a dramatic stair and catwalk that also allows upper level coaching and viewing of all the new courts.

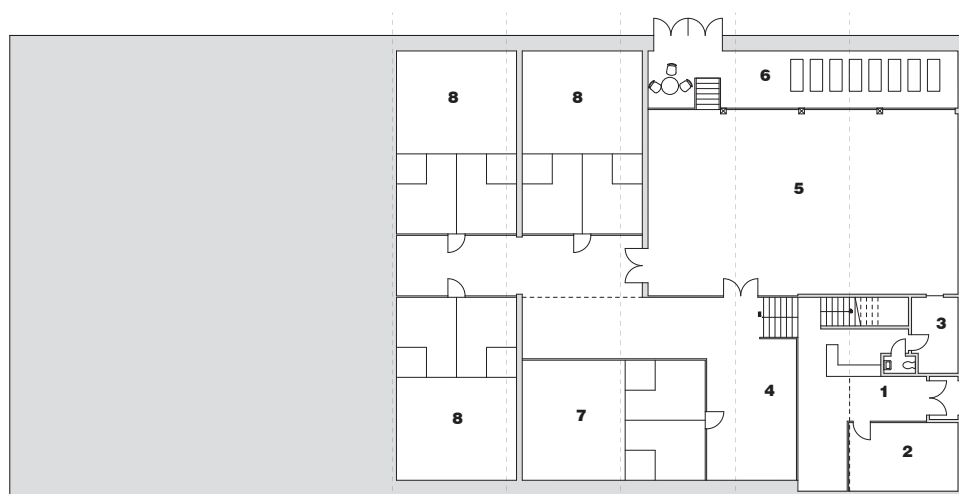
client	Mark Lewis
size	10,500 s.f.
construction cost (projected)	\$2.1 M



Transverse section



Mezzanine Level Plan



Lower Level Plan



View from the Cardio Deck

KEY:

Lower Level

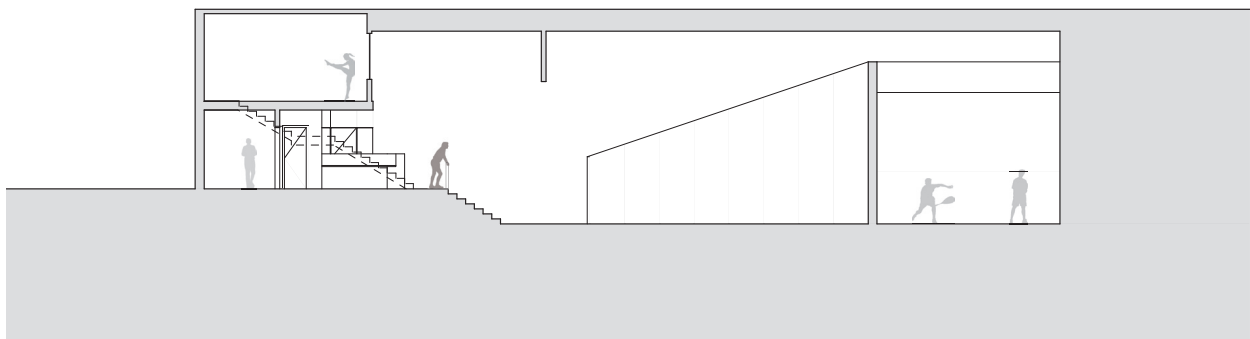
- 1 Entry/Reception
- 2 Pro Shop
- 3 Office
- 4 Lounge
- 5 Weight Room
- 6 Cardio Deck
- 7 Exhibition Court
- 8 Squash Courts

Mezzanine Level

- 9 Massage Room
- 10 Men's Locker Room
- 11 Women's Locker Room
- 12 Mezzanine Viewing Area
- 13 Group Classroom



View from main entrance



Longitudinal Sections