



## MAPLE JUICE COVE: A COASTAL CAMP

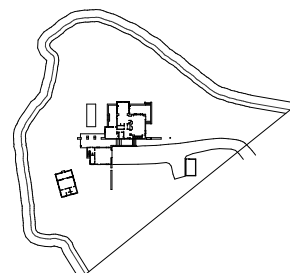
Cushing, Maine  
2004

Kimo Griggs Architects was asked to design a family compound of small buildings to serve as a summer retreat for several generations. The close proximity to the shoreline limited development to rebuilding structures on existing footprints of older structures, so with the general massing thus preordained the challenge was to reorganize the plan to work better with the site and to create spaces for inter-generational gathering as well as discrete, private places. The master accommodations are strategically located in the peripheral cabin with a screen porch particularly well suited for tea with grandchildren. The middle sail loft building contains a studio apartment and a project room below. In the main house the kitchen, dining and living areas are deliberately open in plan and to the outside decks and views beyond.

Exterior spaces are used to expand communal space and to place circulation outside of the relatively small building footprints. The central axis of the project is the boardwalk defined on the shore side by the long red wall that doubles as the façade of the main house. The buildings and spaces on the public side of the red wall are distinctly rustic, with rafter tails and double hung windows, while a modernist approach was used on the more private shore side of the wall, utilizing flat soffits, casement windows, raised decks and an open plan for the main house.

client	Private Residence
size	2950 s.f.
construction cost	undisclosed
status	completed 2004

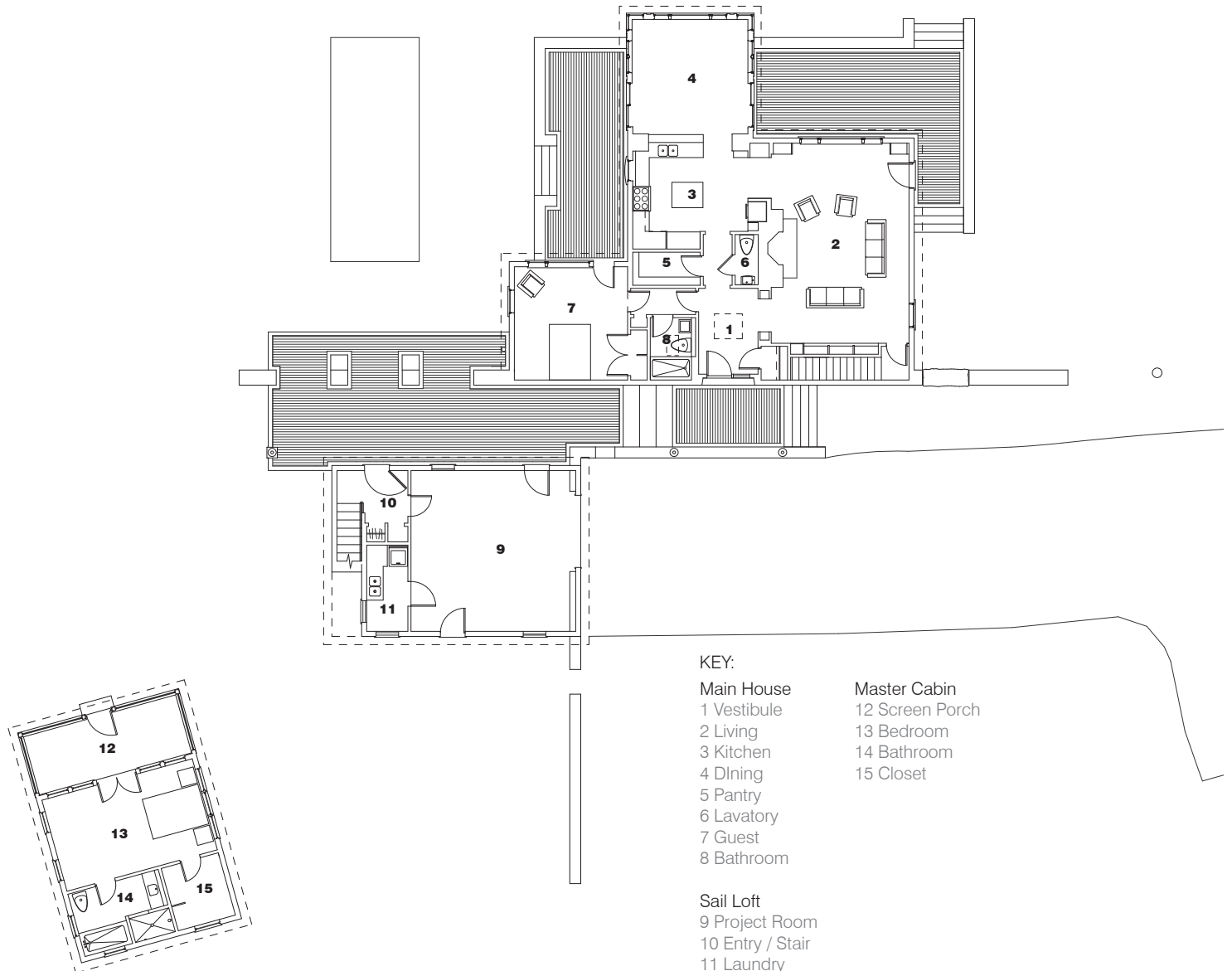
Site plan





View of sail-loft building

Plan







View of custom railing in sail loft



View of trellis bracket,



View from interconnecting deck